

Jürgen Mayer

Tremor – Rigor – Grindcore

für 5 Schlagzeuger

2006

Partitur

Jürgen Mayer
Tremor – Rigor – Grindcore
Für 5 Schlagzeuger
Copyright © 2006 by Jürgen Mayer, Wien
Alle Rechte vorbehalten

Tremor - Rigor - Grindcore

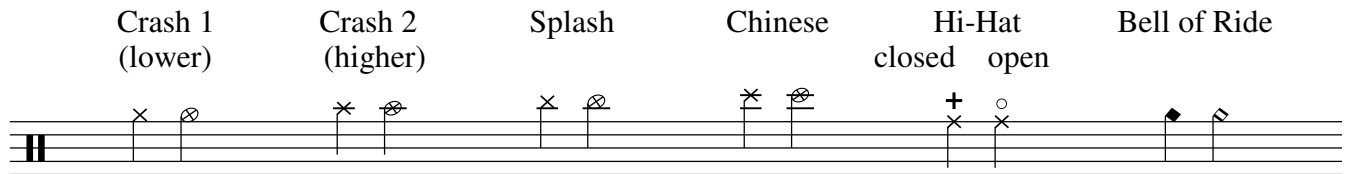
Jürgen Mayer

Legend

Drum Set - Drums



Drum Set - Cymbals



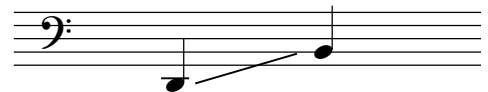
Wood Blocks



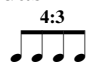
Roto-Toms



Timpani (Range)



Bei solchen und ähnlichen rhythmischen Gruppierungen ist eigentlich jene rhythmische Figur gemeint, die das

Drum Set schon vorwegnimmt: 

Die kompliziertere Schreibweise ist lediglich notationsbedingt.

Separater Spieler: Dies ist ein zusätzlicher 6. Spieler, der sich nicht auf der Bühne befinden soll.

Je nach Beschaffenheit des Veranstaltungsraums kann er sich entweder auf einer Galerie, Kanzel oder auch im Publikum befinden, wobei jedoch darauf zu achten ist, dass er erst auch mit seinem Einsatz auftritt.

Er soll also quasi für das Publikum unerwartet und überraschend in Erscheinung treten. Das Triangel soll nicht an einem Stativ befestigt sein, sondern demonstrativ in der Hand vor der Brust gehalten und geschlagen werden.

Tremor - Rigor - Grindcore

Jürgen Mayer

Langsam ♩ = ca. 60

The score is for a percussion ensemble in 4/4 time. The tempo is marked 'Langsam' (slow) at approximately 60 beats per minute. The instruments and their parts are as follows:

- Triangle:** Plays a melodic line starting with a half note on the first beat, followed by quarter notes on the second and third beats, and a half note on the fourth beat. The first measure is marked *p*.
- Wood Blocks:** Remains silent throughout the piece.
- Marimba:** Remains silent throughout the piece.
- Crotales:** Plays a melodic line starting with a half note on the first beat, followed by quarter notes on the second and third beats, and a half note on the fourth beat. The first measure is marked *p*.
- Tubular Bells:** Remains silent throughout the piece.
- Roto-toms:** Remains silent throughout the piece.
- Tam-tam (Medium/Grande):** Remains silent until the fourth measure, where it plays a half note marked *pp*, followed by a quarter note on the fifth beat.
- Cymbals:** Remains silent throughout the piece.
- Timpani:** Remains silent throughout the piece.
- Thunder Sheet:** Remains silent throughout the piece.
- Concert Bass Drum:** Plays a half note on the first beat, followed by a quarter note on the second beat, and a half note on the fourth beat. The first measure is marked *pp*. There are also some markings on the staff, possibly indicating mallets or specific techniques.
- Chimes:** Remains silent throughout the piece.
- Drum Set:** Remains silent throughout the piece.

7

Tri.

W. Bl.

Mar.

Crot.

Tub. B.

R.-t.

T.-t.

Cym.

Timp.

T.S.

B. D.

Chimes

Dr.

pp

p

pp *mp*

p *pp* *mp*

Detailed description of the musical score: The score is for a percussion ensemble. It consists of 13 staves. The first four staves (Tri., W. Bl., Mar., Crot.) are grouped together. The next four staves (Tub. B., R.-t., T.-t., Cym.) are grouped together. The last five staves (Timp., T.S., B. D., Chimes, Dr.) are grouped together. The music is in 3/4 and 4/4 time signatures. The first measure is marked with a '7' above the Tri. staff. The W. Bl. staff has a *pp* dynamic marking. The Crot. staff has a *p* dynamic marking. The T.-t. staff has a *p* dynamic marking. The Timp. staff has a *pp* dynamic marking and a crescendo to *mp*. The B. D. staff has a *pp* dynamic marking. The Dr. staff has a *p* dynamic marking and a crescendo to *mp*.

12

Musical score for percussion instruments, divided into four measures with time signatures 4/4, 3/4, 4/4, and 3/4. The instruments and their parts are:

- Tri.**: Mute (H) in 4/4, 3/4, 4/4, and 3/4.
- W. Bl.**: Mute (H) in 4/4, 3/4, 4/4, and 3/4.
- Mar.**: Mute (H) in 4/4, 3/4, 4/4, and 3/4. In the 4/4 measure, plays a *mf* chord.
- Crot.**: Mute (H) in 4/4, 3/4, 4/4, and 3/4. In the 4/4 measure, plays a *mf* chord.
- Tub. B.**: Mute (H) in 4/4, 3/4, 4/4, and 3/4.
- R.-t.**: Mute (H) in 4/4, 3/4, 4/4, and 3/4.
- T.-t.**: Mute (H) in 4/4, 3/4, 4/4, and 3/4. In the 4/4 measure, plays a *mp* chord.
- Cym.**: Mute (H) in 4/4, 3/4, 4/4, and 3/4.
- Timp.**: *mp* in 4/4, *gliss.* in 4/4, *gliss.* in 3/4, and *mp* in 4/4.
- T.S.**: Mute (H) in 4/4, 3/4, 4/4, and 3/4.
- B. D.**: *mp* in 4/4, *mf* in 4/4, and *mf* in 4/4.
- Chimes**: Mute (H) in 4/4, 3/4, 4/4, and 3/4.
- Dr.**: Mute (H) in 4/4, 3/4, 4/4, and 3/4.

15

Tri. $\frac{3}{4}$ $\frac{4}{4}$ $\frac{3}{4}$ $\frac{4}{4}$ $\frac{5}{4}$

W. Bl. $\frac{3}{4}$ $\frac{4}{4}$ $\frac{3}{4}$ $\frac{4}{4}$ $\frac{5}{4}$

Mar. $\frac{3}{4}$ $\frac{4}{4}$ $\frac{3}{4}$ $\frac{4}{4}$ $\frac{5}{4}$

Crot. $\frac{3}{4}$ $\frac{4}{4}$ $\frac{3}{4}$ $\frac{4}{4}$ $\frac{5}{4}$

Tub. B. $\frac{3}{4}$ $\frac{4}{4}$ $\frac{3}{4}$ $\frac{4}{4}$ $\frac{5}{4}$

R.-t. $\frac{3}{4}$ $\frac{4}{4}$ $\frac{3}{4}$ $\frac{4}{4}$ $\frac{5}{4}$

T.-t. $\frac{3}{4}$ $\frac{4}{4}$ $\frac{3}{4}$ $\frac{4}{4}$ $\frac{5}{4}$

Cym. $\frac{3}{4}$ $\frac{4}{4}$ $\frac{3}{4}$ $\frac{4}{4}$ $\frac{5}{4}$

Timp. $\frac{3}{4}$ $\frac{4}{4}$ $\frac{3}{4}$ $\frac{4}{4}$ $\frac{5}{4}$
f *p*

T.S. $\frac{3}{4}$ $\frac{4}{4}$ $\frac{3}{4}$ $\frac{4}{4}$ $\frac{5}{4}$

B. D. $\frac{3}{4}$ $\frac{4}{4}$ $\frac{3}{4}$ $\frac{4}{4}$ $\frac{5}{4}$
f *p*

Chimes $\frac{3}{4}$ $\frac{4}{4}$ $\frac{3}{4}$ $\frac{4}{4}$ $\frac{5}{4}$

Dr. $\frac{3}{4}$ $\frac{4}{4}$ $\frac{3}{4}$ $\frac{4}{4}$ $\frac{5}{4}$
f *pp*

19

Tri. $\text{H } \frac{5}{4}$ $\frac{4}{4}$

W. Bl. $\text{H } \frac{5}{4}$ $\frac{4}{4}$

Mar. $\frac{5}{4}$ $\frac{4}{4}$

Crot. $\frac{5}{4}$ $\frac{4}{4}$

Tub. B. $\frac{5}{4}$ $\frac{4}{4}$

R.-t. $\text{H } \frac{5}{4}$ $\frac{4}{4}$

T.-t. $\text{H } \frac{5}{4}$ $\frac{4}{4}$

Cym. $\text{H } \frac{5}{4}$ $\frac{4}{4}$

Timp. $\frac{5}{4}$ $\frac{4}{4}$

T.S. $\text{H } \frac{5}{4}$ $\frac{4}{4}$

B. D. $\text{H } \frac{5}{4}$ $\frac{4}{4}$

Chimes $\text{H } \frac{5}{4}$ $\frac{4}{4}$

Dr. $\frac{5}{4}$ $\frac{4}{4}$

f < ff

f

f p subito

gliss.

gliss.

kein gliss.

f

p

f

f

3

3

6

f

3

22

Tri. $\text{H } \frac{4}{4}$

W. Bl. $\text{H } \frac{4}{4}$

Mar. $\text{G } \frac{4}{4}$
 $\text{F } \frac{4}{4}$
p

Crot. $\text{G } \frac{4}{4}$

Tub. B. $\text{G } \frac{4}{4}$

R.-t. $\text{H } \frac{4}{4}$

T.-t. $\text{H } \frac{4}{4}$
mf ff

Cym. $\text{H } \frac{4}{4}$

Timp. $\text{F } \frac{4}{4}$
pp *ff*

T.S. $\text{H } \frac{4}{4}$

B. D. $\text{H } \frac{4}{4}$
ff

Chimes $\text{H } \frac{4}{4}$

Dr. $\text{H } \frac{4}{4}$
ff

25

Musical score for percussion instruments. The score is divided into two systems. The first system includes Tri., W. Bl., Mar., Cro., Tub. B., R.-t., T.-t., Cym., and Timp. The second system includes T.S., B. D., Chimes, and Dr. The time signature is 6/4, which changes to 4/4 at the end of the piece. Dynamics include *mf*, *pp*, and *ff*. Rhythmic patterns include triplets (3), sextuplets (6), and triplets (3) in the T.-t., Timp., B. D., and Dr. parts.

28

Tri.

W. Bl.

Mar.

p
sempre legato

Parkinson-Thema

Crot.

Tub. B.

R.-t.

T.-t.

Cym.

Timp.

mf

T.S.

B. D.

Chimes

Dr.

p

33

Musical score for percussion instruments. The score is divided into five systems. The instruments listed on the left are: Tri., W. Bl., Mar., Crot., Tub. B., R.-t., T.-t., Cym., Timp., T.S., B. D., Chimes, and Dr. The notation includes various rhythmic patterns, rests, and dynamic markings such as *p*, *pp*, and *ppp*. The Mar. part features complex rhythmic patterns with accents and slurs. The Timp. part has a *pp* marking. The Dr. part has a *ppp* marking. The Crot. part has a *p* marking. The T.-t. part has a *p* marking. The B. D. part has a *p* marking. The Mar. part has a *ppp* marking. The Dr. part has a *ppp* marking.

ppp

Più mosso (♩ = ca. 168)

38

Tri.

W. Bl.

Mar. *decresc.* *pp*

Crot.

Tub. B.

R.-t.

T.-t.

Cym.

Timp. *mf* *pp*

T.S.

B. D.

Chimes

Dr. *p* 4:3 3 3

44

Musical score for percussion instruments. The score is organized into systems. The first system includes Tri., W. Bl., and Mar. The second system includes Crot., Tub. B., R.-t., and T.-t. The third system includes Cym. and Timp. The fourth system includes T.S. and B. D. The fifth system includes Chimes and Dr. The Dr. part features a complex rhythmic pattern with triplets and a 4:3 ratio. The other instruments have a simpler rhythmic pattern with rests and accents.

53

Tri.

W. Bl.

Mar.

Crot.

Tub. B.

R.-t.

T.-t.

Cym.

Timp.

T.S.

B. D.

Chimes

Dr.

p

3

3

3

3

3

4:3

3

3

Detailed description of the musical score: The score is for a percussion ensemble. It consists of 13 staves. The top staff is for Triangles (Tri.), which are silent. The second staff is for Wood Block (W. Bl.), featuring a melodic line with eighth notes and triplets, starting with a piano (*p*) dynamic. The third staff is for Maracas (Mar.), which are silent. The fourth staff is for Crotales (Crot.), which are silent. The fifth staff is for Bass Tubular Bells (Tub. B.), which are silent. The sixth staff is for Tom-toms (R.-t.), which are silent. The seventh staff is for Tom-toms (T.-t.), which are silent. The eighth staff is for Cymbals (Cym.), which are silent. The ninth staff is for Tom-toms (Timp.), which are silent. The tenth staff is for Tom-toms (T.S.), which are silent. The eleventh staff is for Bass Drum (B. D.), which is silent. The twelfth staff is for Chimes, which are silent. The thirteenth staff is for Drums (Dr.), featuring a complex rhythmic pattern with triplets and a 4:3 time signature. Dynamics include *p*, and rhythmic markings include 3, 3, 3, 3, 3, 4:3, 3, and 3.

60

Tri.

W. Bl.

Mar.

Crot.

Tub. B.

R.-t.

T.-t.

Cym.

Timp.

T.S.

B. D.

Chimes

Dr.

p

3

4:3

74

Musical score for percussion instruments. The score is divided into two systems. The first system includes Tri., W. Bl., Mar., Cro., Tub. B., R.-t., T.-t., Cym., and Timp. The second system includes T.S., B. D., Chimes, and Dr. The W. Bl. and Dr. parts feature triplet patterns. The R.-t. part has a melodic line with triplets. The Mar., Cro., Tub. B., Cym., Timp., T.S., B. D., and Chimes parts are mostly silent, indicated by rests.

81

Tri.

W. Bl.

Mar.

Crot.

Tub. B.

R.-t.

T.-t.

Cym.

Timp.

T.S.

B. D.

Chimes

Dr.

4:3

3

3

3

p

X^o

X⁺

87

Musical score for percussion instruments, starting at measure 87. The instruments listed are Tri., W. Bl., Mar., Cro., Tub. B., R.-t., T.-t., Cym., Timp., T.S., B. D., Chimes, and Dr. The score features various rhythmic patterns, including triplets and rests, across ten staves. The bottom staff (Dr.) includes a 4:3 time signature and additional triplet markings.

93

Tri.

W. Bl. *poco a poco cresc.*

Mar.

Crot.

Tub. B.

R.-t. *poco a poco cresc.*

T.-t.

Cym.

Timp. *poco a poco cresc.*

T.S. *poco a poco cresc.* schütteln

B. D.

Chimes

Dr. *poco a poco cresc.*

99


Musical score for percussion instruments, starting at measure 99. The score includes parts for Triangle (Tri.), Wood Block (W. Bl.), Maracas (Mar.), Crotales (Crot.), Bass Tubular Bells (Tub. B.), Snare Tom (R.-t.), Tenor Tom (T.-t.), Cymbal (Cym.), Tom-tom (Timp.), Tom Snare (T.S.), Bass Drum (B. D.), Chimes, and Drums (Dr.).

The score is divided into two systems. The first system includes Tri., W. Bl., Mar., Crot., Tub. B., R.-t., T.-t., Cym., Timp., T.S., B. D., Chimes, and Dr. The second system includes Crot., Tub. B., R.-t., T.-t., Cym., Timp., T.S., B. D., Chimes, and Dr.

Key features of the score include:

- Tri.:** Rests in all measures.
- W. Bl.:** Melodic line with triplets in measures 99, 100, and 101.
- Mar.:** Rests in all measures.
- Crot.:** Rests in all measures.
- Tub. B.:** Rests in all measures.
- R.-t.:** Melodic line with triplets in measures 100 and 101.
- T.-t.:** Rests in all measures.
- Cym.:** Rests in all measures.
- Timp.:** Melodic line with triplets in measures 99, 100, and 101.
- T.S.:** Sustained notes in measures 99, 100, and 101.
- B. D.:** Rests in all measures.
- Chimes:** Rests in all measures.
- Dr.:** Complex rhythmic pattern with triplets and accents in measures 99, 100, and 101.

separater Spieler, isoliert,
befindet sich nicht auf der Bühne

Triangle 
f

105



Tri.

W. Bl.

Mar.

Crot.

Tub. B.

R.-t.

T.-t.

Cym.

Timp.

T.S.

B. D.

Chimes

Dr.

3 3 3 3

4:3

3 3 3

ff $\frac{4}{4}$

111

Musical score for percussion instruments. The score is in 4/4 time and features various rhythmic patterns and dynamics. The instruments listed are Tri., W. Bl., Mar., Crot., Tub. B., R.-t., T.-t., Cym., Timp., T.S., B. D., Chimes, and Dr. The score includes dynamics such as *ff* and articulation marks like accents and slurs. The score is divided into two systems, with the first system containing Tri., W. Bl., Mar., Crot., Tub. B., R.-t., T.-t., Cym., Timp., T.S., B. D., Chimes, and Dr. The second system contains the same instruments. The score includes various rhythmic patterns, including eighth notes, quarter notes, and sixteenth notes, as well as triplets and 4:3 ratios. The score is marked with *ff* (fortissimo) and includes articulation marks like accents and slurs. The score is divided into two systems, with the first system containing Tri., W. Bl., Mar., Crot., Tub. B., R.-t., T.-t., Cym., Timp., T.S., B. D., Chimes, and Dr. The second system contains the same instruments. The score includes various rhythmic patterns, including eighth notes, quarter notes, and sixteenth notes, as well as triplets and 4:3 ratios. The score is marked with *ff* (fortissimo) and includes articulation marks like accents and slurs.

119 **Tempo primo** (♩ = ca. 60)

Tri. $\frac{4}{4}$

W. Bl. $\frac{4}{4}$

Mar. $\frac{4}{4}$

Crot. $\frac{4}{4}$

Tub. B. $\frac{4}{4}$

R.-t. $\frac{4}{4}$

T.-t. $\frac{4}{4}$

Cym. $\frac{4}{4}$

Timp. $\frac{4}{4}$

T.S. $\frac{4}{4}$

B. D. $\frac{4}{4}$

Chimes $\frac{4}{4}$

Dr. $\frac{4}{4}$

p sempre legato

mf sempre legato

Tempo primo (♩ = ca. 60)

pp

pp

pp

125

Musical score for percussion instruments, measures 125-128. The score is in 3/4 time. The instruments listed are Tri., W. Bl., Mar., Cro., Tub. B., R.-t., T.-t., Cym., Timp., T.S., B. D., Chimes, and Dr. The Mar. part features a melodic line with dynamics *f*, *pp*, and *ff*. The Timp. part has dynamics *mf*, *pp*, and *ff*. The B. D. part has dynamics *mf*, *pp*, and *ff*. The Dr. part has dynamics *mf*, *pp*, *mf*, *pp*, and *ff*. The score includes various musical notations such as rests, notes, and dynamic markings.

130 Più mosso (♩ = ca. 126)

Musical score for percussion instruments. The instruments listed are Tri., W. Bl., Mar., Crot., Tub. B., R.-t., T.-t., Cym., Timp., T.S., and B. D. Each instrument has a staff with a 3/4 time signature. The notation consists of rests in every measure, indicating that these instruments are silent during this section.

Più mosso (♩ = ca. 126)

Musical score for Chimes and Dr. The Chimes part has a 3/4 time signature and contains rests in all measures. The Dr. part has a 3/4 time signature and features a rhythmic pattern starting with a forte (*f*) dynamic. The pattern includes eighth notes, some marked with 'x' or '*', and a triplet of eighth notes. A 4:3 cross-rhythm is indicated over the final two measures of the triplet.

134

Musical score for percussion instruments. The score is divided into two systems. The first system includes Tri., W. Bl., Mar., Crot., Tub. B., R.-t., T.-t., Cym., and Timp. The second system includes T.S., B. D., Chimes, and Dr. The time signature changes from 2/4 to 3/4 at the end of the first system. The Dr. part features a complex rhythmic pattern with triplets, a fermata, and dynamic markings.

Tri. $\text{H } \frac{2}{4}$ $\frac{3}{4}$

W. Bl. $\text{H } \frac{2}{4}$ $\frac{3}{4}$

Mar. $\text{H } \frac{2}{4}$ $\frac{3}{4}$

Crot. $\text{H } \frac{2}{4}$ $\frac{3}{4}$

Tub. B. $\text{H } \frac{2}{4}$ $\frac{3}{4}$ *f*

R.-t. $\text{H } \frac{2}{4}$ $\frac{3}{4}$

T.-t. $\text{H } \frac{2}{4}$ $\frac{3}{4}$

Cym. $\text{H } \frac{2}{4}$ $\frac{3}{4}$

Timp. $\text{H } \frac{2}{4}$ $\frac{3}{4}$

T.S. $\text{H } \frac{2}{4}$ $\frac{3}{4}$

B. D. $\text{H } \frac{2}{4}$ $\frac{3}{4}$

Chimes $\text{H } \frac{2}{4}$ $\frac{3}{4}$

Dr. $\text{H } \frac{2}{4}$ $\frac{3}{4}$

139

Musical score for percussion instruments in 2/4 time. The score includes parts for Triangle (Tri.), Wood Block (W. Bl.), Maracas (Mar.), Crotales (Croc.), Bass Trombone (Tub. B.), Snare Drum (R.-t.), Tom-tom (T.-t.), Cymbal (Cym.), Timpani (Timp.), Snare Drum (T.S.), Bass Drum (B. D.), Chimes, and Drum (Dr.).

The score is divided into three measures. The first measure shows the beginning of the piece with various percussion instruments. The second measure features a melodic line for the Bass Trombone (Tub. B.) and a dynamic marking of *f* (forte) for the Tom-tom (T.-t.). The third measure continues the rhythmic patterns, including a triplet of eighth notes for the Chimes and a 4:3 ratio for the Drum (Dr.).

Key features of the score include:

- Time Signature:** 2/4
- Measure 1:** Introduction of various percussion instruments.
- Measure 2:** Melodic line for Tub. B. and dynamic marking *f* for T.-t.
- Measure 3:** Complex rhythmic patterns for Chimes and Drum (Dr.), including triplets and a 4:3 ratio.

142

Musical score for percussion instruments. The score is divided into two systems. The first system includes Tri., W. Bl., Mar., Crot., Tub. B., R.-t., and T.-t. The second system includes Cym., Timp., T.S., B. D., Chimes, and Dr. The time signature changes from 2/4 to 3/4 in the fifth measure of the first system. The Dr. part features triplets and accents.

Tri. $\text{H } \frac{2}{4}$ $\frac{3}{4}$

W. Bl. $\text{H } \frac{2}{4}$ $\frac{3}{4}$

Mar. $\text{H } \frac{2}{4}$ $\frac{3}{4}$

Crot. $\text{H } \frac{2}{4}$ $\frac{3}{4}$

Tub. B. $\text{H } \frac{2}{4}$ $\frac{3}{4}$

R.-t. $\text{H } \frac{2}{4}$ $\frac{3}{4}$

T.-t. $\text{H } \frac{2}{4}$ $\frac{3}{4}$

Cym. $\text{H } \frac{2}{4}$ $\frac{3}{4}$ *f*

Timp. $\text{H } \frac{2}{4}$ $\frac{3}{4}$

T.S. $\text{H } \frac{2}{4}$ $\frac{3}{4}$

B. D. $\text{H } \frac{2}{4}$ $\frac{3}{4}$ *f*

Chimes $\text{H } \frac{2}{4}$ $\frac{3}{4}$

Dr. $\text{H } \frac{2}{4}$ $\frac{3}{4}$

150

Musical score for percussion instruments. The score is in 2/4 time and features various rhythmic patterns and dynamics. The instruments listed are Tri., W. Bl., Mar., Croc., Tub. B., R.-t., T.-t., Cym., Timp., T.S., B. D., Chimes, and Dr. The score includes rests for most instruments, with specific rhythmic figures for the Maraca, B. D., Chimes, and Drums. The Maraca part features a melodic line in the bass clef. The B. D. part has a triplet of eighth notes marked *f*. The Chimes part has a triplet of eighth notes. The Drums part has a complex rhythmic pattern with triplets and a final cross symbol.

154

Musical score for percussion instruments in 3/4 time, measures 154-155. The instruments listed are Tri., W. Bl., Mar., Cro., Tub. B., R.-t., T.-t., Cym., Timp., T.S., B. D., Chimes, and Dr.

The score shows the following parts:

- Tri., W. Bl., Mar., Cro., R.-t., T.-t., Cym., Timp., T.S.:** These instruments have rests in both measures.
- Mar. (Bass Clef):** Measures 154-155: A half note G2, a half note F2, a half note E2, a half note D2, a quarter rest, and a quarter rest.
- Tub. B. (Treble Clef):** Measures 154-155: A half rest, a half note G4, a half note F4, and a half note E4.
- B. D. (Bass Clef):** Measures 154-155: A half note G2, a half note F2, and a half note E2.
- Chimes (Treble Clef):** Measures 154-155: A half note G4, a half note F4, and a half note E4.
- Dr. (Bass Clef):** Measures 154-155: A half note G2, a half note F2, and a half note E2.

Measure 154 contains triplets of eighth notes for Chimes and Dr. Measure 155 contains quarter notes for Chimes and Dr.

156

Tri. $\frac{2}{4}$

W. Bl. $\frac{2}{4}$

Mar. $\frac{2}{4}$

Croc. $\frac{2}{4}$

Tub. B. $\frac{2}{4}$

R.-t. $\frac{2}{4}$

T.-t. $\frac{2}{4}$

Cym. $\frac{2}{4}$

Timp. $\frac{2}{4}$

T.S. $\frac{2}{4}$

B. D. $\frac{2}{4}$

Chimes $\frac{2}{4}$

Dr. $\frac{2}{4}$

3 4:3 3 3 3 3 3 3 3

158

Musical score for percussion instruments, measures 158-161. The score is in 2/4 time and spans four measures. The instruments listed are Tri., W. Bl., Mar., Croc., Tub. B., R.-t., T.-t., Cym., Timp., T.S., B. D., Chimes, and Dr.

Measure 158: Tri., W. Bl., Mar., Croc., R.-t., T.-t., Cym., T.S., and Chimes are silent. Timp. plays a quarter note G2 (marked *ff*) and a quarter note F2. Mar. and Tub. B. play a quarter note G2 (marked *f*) and a quarter note F2. B. D. plays a quarter note G2. Dr. plays a quarter note G2.

Measure 159: Tri., W. Bl., Mar., Croc., R.-t., T.-t., Cym., T.S., and Chimes are silent. Timp. plays a quarter note G2 and a quarter note F2. Mar. and Tub. B. play a quarter note G2 and a quarter note F2. B. D. plays a quarter note G2. Dr. plays a quarter note G2.

Measure 160: Tri., W. Bl., Mar., Croc., R.-t., T.-t., Cym., T.S., and Chimes are silent. Timp. plays a quarter note G2 and a quarter note F2. Mar. and Tub. B. play a quarter note G2 and a quarter note F2. B. D. plays a quarter note G2. Dr. plays a quarter note G2.

Measure 161: Tri., W. Bl., Mar., Croc., R.-t., T.-t., Cym., T.S., and Chimes are silent. Timp. plays a quarter note G2 and a quarter note F2. Mar. and Tub. B. play a quarter note G2 and a quarter note F2. B. D. plays a quarter note G2. Dr. plays a quarter note G2.

162

Tri. $\text{H } \frac{3}{4}$

W. Bl. $\text{H } \frac{3}{4}$

Mar. $\text{G } \frac{3}{4}$
 $\text{F } \frac{3}{4}$

ff sempre legato

Croc. $\text{G } \frac{3}{4}$

Tub. B. $\text{G } \frac{3}{4}$
f *simile*

R.-t. $\text{H } \frac{3}{4}$

T.-t. $\text{H } \frac{3}{4}$

Cym. $\text{H } \frac{3}{4}$

Timp. $\text{F } \frac{3}{4}$
f

T.S. $\text{H } \frac{3}{4}$

B. D. $\text{H } \frac{3}{4}$
f

Chimes $\text{H } \frac{3}{4}$

Dr. $\text{H } \frac{3}{4}$
ff 3 3 3 3 3 3

164

Musical score for percussion instruments in 2/4 time, starting at measure 164. The score includes parts for Triangle (Tri.), Wood Block (W. Bl.), Maracas (Mar.), Crotales (Cro.), Bass Tuba (Tub. B.), Snare Drum (R.-t.), Tom-tom (T.-t.), Cymbal (Cym.), Timpani (Timp.), Snare Drum (T.S.), Bass Drum (B. D.), Chimes, and Drum (Dr.).

The Maracas part features a rhythmic pattern of eighth notes with maraca markings (three horizontal lines) in the first two staves of each measure. The Bass Drum (B. D.) and Timpani (Timp.) parts have notes with a slur and a fermata, indicating a sustained sound. The Chimes part consists of triplet eighth notes marked with 'x' symbols. The Drum (Dr.) part features a complex rhythmic pattern with triplet eighth notes and rests.

169

Musical score for percussion instruments. The score is divided into measures with 3/4 and 2/4 time signatures. The instruments listed are Tri., W. Bl., Mar., Crot., Tub. B., R.-t., T.-t., Cym., Timp., T.S., B. D., Chimes, and Dr. The score includes dynamic markings such as *ff* and *ff*. The Mar. part features a triplet of eighth notes with a fermata. The Tub. B. part features a triplet of eighth notes with a fermata. The Timp. part features a triplet of eighth notes with a fermata. The B. D. part features a triplet of eighth notes with a fermata. The Chimes part features a triplet of eighth notes with a fermata. The Dr. part features a triplet of eighth notes with a fermata.

172

Musical score for percussion instruments. The score is divided into two systems. The first system includes Tri., W. Bl., Mar., Croc., Tub. B., R.-t., T.-t., Cym., Timp., T.S., B. D., Chimes, and Dr. The second system includes Croc., Tub. B., R.-t., T.-t., Cym., Timp., T.S., B. D., Chimes, and Dr. The score features various rhythmic patterns, including triplets and sixteenth notes. A dynamic marking of *ff* is present in the T.-t. part.

Tri. | W. Bl. | Mar. | Croc. | Tub. B. | R.-t. | T.-t. | Cym. | Timp. | T.S. | B. D. | Chimes | Dr.